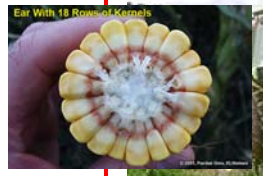


# FORAGER



*Agronomics with livestock in mind!*

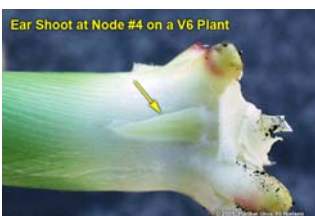


## DETERMINING EAR SIZE IN CORN

The number of harvestable kernels per ear is an important contributor to the yield potential of a corn plant. Severe plant stress during ear formation may limit the potential ear size, and thus yield potential, before pollination has even occurred. Optimum growing conditions set the stage for maximum ear-size potential and exceptional yields at harvest time. The size of what will become the harvestable ear begins by the time a corn plant has reached knee-high and finishes 10 to 14 days prior to silk emergence.

### Ear Shoot Development

An axillary meristem forms at each stalk node (behind the leaf sheath) beginning at the base of the stalk and continuing toward the top, except for the upper six to eight nodes of the plant. Each axillary meristem initiates husk leaves at the



nodes of the ear shank and eventually an ear itself at the distal tip of the ear shank. By about the V5 or V6 stages of development (5-6 visible leaf collars), the growing point (apical meristem) of the corn plant finishes the task of initiating leaf primordia and

completes its developmental responsibilities by initiating the tassel primordium of the plant. At about the same time that the tassel is initiated, the uppermost harvestable (and final) ear is also initiated (*Lejeune and Bernier, 1996*). This uppermost ear is normally located at the 12th to 14th stalk node, corresponding to the 12th to 14th leaf of the plant. Careful removal of the leaves from a stalk, including leaf sheaths, at about growth stage V10 (ten visible leaf collars) will usually reveal 8 to 10 identifiable ear shoots. Each ear shoot originates at a stalk node, behind its respective leaf sheath. At growth stage V10, these tiny ear shoots primarily consist of husk leaf tissue. The developing ears themselves are only a fraction of an inch in length. Initially, the ear shoots found at the lower stalk nodes are longer than the ones at the upper stalk nodes simply because the lower ones were created earlier. As time marches on, the upper one or two ear shoots assume priority over all the lower ones and ultimately become the harvestable ears. Development of the upper ears is favored over the lower ones partly because of hormonal "checks and balances" and partly because of the proximity of the upper ear to the actively photosynthesizing leaves of the upper canopy.

### Ear Size Determination

Row number and kernel number per row are two of several yield components in corn. Typically, from 750 to 1000 ovules (potential kernels) develop on each ear shoot. The number of kernel rows multiplied by the number of kernels per row determines total kernel number per ear.

The actual (harvestable) kernels per ear will average between 400 and 600. For a 16-row ear, one kernel per row is equal to about five bushels per acre (for average populations). Like so many other processes in the corn

plant, kernel row number determination on an ear proceeds in an acropetal (base to tip) fashion. Kernel row number determination of the uppermost ear begins shortly after the ear shoot is initiated (V5 to V6) and is thought to be complete as early as V8 (*Strachan, 2004*). Kernel rows first initiate as "ridges" of cells that eventually differentiate into pairs of rows. Thus, row number on ears of corn is always even unless some sort of stress disrupts the developmental process. True row number is often difficult to visualize in tiny ears dissected from plants younger than about the 12-leaf stage. Row number is determined strongly by plant genetics and less so by environment. This means that row number for any given hybrid will be quite similar from year to year, regardless of growing conditions. Some exceptions to this include the effects of injury from the post-emergence application of certain sulfonylurea herbicides or nearly complete defoliation by hail damage prior to growth stage V8. The potential number of kernels per row is complete by at least V15 and maybe as early as V12 (*Strachan, 2004*). Kernel number (ear length) is strongly affected by environmental stresses. This means that potential ear length will vary dramatically from year to year as growing conditions vary. Severe stress can greatly reduce potential kernel number per row. Conversely, excellent growing conditions can encourage an unusually high number of potential kernels.

### Final Comments

Because ear initiation does not occur until about V5, stress prior to this leaf stage has no direct bearing on ear size determination UNLESS that stress eventually results in a severely stunted or weakened plant. This is true for stress events that damage only the above ground portion of young seedlings without damage to the plants' growing point regions. Such damaged plants usually can recover well with little evidence of the damage some weeks down the road. Severe stress from about V5 to V12 that severely limits photosynthesis can directly interfere with ear size determination and result in fewer kernel rows (less likely) or fewer kernels per row (more likely). While such early stress can be important, recognize that severe stress that occurs shortly before or shortly after pollination has a far greater potential to reduce yield per day of stress.

*(edited from an article by Bob Nielsen, Purdue University Extension)*

**RENAISSANCE NUTRITION...for Nutronomy!**

